

EM45 RFID Enterprise Mobile Accessories Guide

The Power of Zebra in Your Pocket.

Revised March 2025



I.	Accessories that PROTECT devices	
1	Protective case, screen protector, belt, and shoulder strap	
1.1	Protective case, screen protector, belt, and shoulder strap	3
II.	Accessories that ENABLE productivity solutions	
2	Headset	
2.1	Wired headset for Workcloud Sync	4
2.2	Wireless headsets for voice-directed picking	5
III.	Accessories that POWER devices	
3	Cable, and Power Supply Adapters	6
IV.	Workstation Connect Cradle	
4	Workstation Connect Cradle	7
4.1	Country-specific AC line cords	8
V.	Third Party Accessories for EM45 RFID	
5	RAM 3rd Party Inteliskin and Vehicle Dock	11
5.1	RAM 3rd Party Charging Cradles	12
5.2	RAM 3rd Party Mounts and Accessories	13
5.3	Mobilis 3rd Party Boots, Straps	14

Rugged boot, and screen protector



Rugged boot

SKU# [SG-EM45EXO1-01](#)

Protective case for EM45 RFID.

- Boot increases drop spec of device from 1.2 m (4 ft.) to 1.5 m (5 ft.)

** Please note this accessory is a consumable and may require replacement during the device's lifespan.*

Screen protector

SKU# [SG-EM45-SCRNPT1-1](#)

One tempered glass screen protector for EM45 RFID.

- Includes: Alcohol wipes, cleaning cloth, and instructions needed for screen protector installation.
- Also available as a [10-pack](#) — 10 screen protectors — [SKU# SG-EM45-SCRNPT-10](#)

** Please note this accessory is a consumable and may require replacement during the device's lifespan.*

Shoulder strap

SKU# [58-40000-007R](#)

Universal shoulder strap.

- Extends from 22 to 55 inches and is 1.5 inches wide.
- Compatible with Mobilis Holster [3PTY-MOB-031002](#) (sold separately).

** Please note this accessory is a consumable and may require replacement during the device's lifespan.*

Belt for holster

SKU# [11-08062-02R](#)

Universal belt.

- Extends 48 inches and is 2 inches wide
- Compatible with Mobilis Holster [3PTY-MOB-031002](#) (sold separately).

** Please note this accessory is a consumable and may require replacement during the device's lifespan.*

[Back to Table of Contents](#)

Accessories that enable productivity solutions



Headsets

Close gaps, Open possibilities with Workcloud Sync

Usher in a new era of transformation—one led by your frontline and powered by Zebra Workcloud Sync. One where communication and information flows freely and gaps between teams, workflows and data are closed.

With Workcloud Sync, hindered workers become effective problem solvers, contributing their best. Critical workflows are streamlined in one place, on one device, equipping workers with the information they need, right at their fingertips.

Only Zebra offers the most complete lineup of software and rugged hardware with the scalability, support and service needed to make the greatest impact where it counts—on the frontline.

[Learn more about you can elevate your frontline workers with Zebra Workcloud Sync.](#)



Wired headsets for Workcloud Sync

SKU# HDST-USBC-PTT1-01

PTT headset with USB-C connector; one-piece solution.

- For Push-To-Talk (PTT) applications with volume up/volume down/PTT buttons. Compatible with PTT Express/PTT Pro.
- Rotating earpiece allows for right or left ear configuration. Mono headset with microphone.
- Includes clip for attaching PTT button to clothing.

Headsets

Rugged Bluetooth and corded HD voice headsets for the most demanding industrial environments

When it comes to enabling speech-driven applications and voice communications in warehouses, manufacturing plants and outdoor yards, you need a headset that is specially designed for the job. The HS3100 Bluetooth and HS2100 corded headsets are loaded with features that offer everything you need in an industrial headset.



Wireless headsets for voice-directed picking

HS3100 rugged Bluetooth headset

Bluetooth headset for voice-directed picking applications.

- Noise cancellation tuned for Voice-Directed Picking applications.
- Swap batteries on the fly — without losing the Bluetooth connection.
- Split-second tap-to-pair simplicity using NFC. 15 hours of battery power.

SKU#	Description
HS3100-OTH	HS3100 Bluetooth Headset Over-The-Head Headband includes HS3100 Boom Module and HSX100 OTH Headband Module
HS3100-BTN-L	HS3100 Bluetooth Headset (Behind-the-neck headband left)
HS3100-OTH-SB	HS3100 Bluetooth Headset (Over-the-head headband) includes HS3100 Shortened Boom Module and HSX100 OTH headband module
HS3100-BTN-LSB	HS3100 Bluetooth Headset (Behind-the-neck headband left) includes HS3100 Shortened Boom Module and HSX100 BTN headband module
HS3100-SBOOM-01	HS3100 Shortened Boom Module (includes microphone boom, battery and windscreen)

Accessories that power devices



Cable and Power Supply Adaptor

SKU#	Description	Note
CBL-EC5X-USBC3A-01	USB-C to USB-C communications and charging cable, 1M long; support 3.0 superspeed and fast charge.	Sold separately. To be used with PWR-WUA5V45W1XX (replace “XX” in SKU as follows to get the right plug style based on region.) <ul style="list-style-type: none"> • US (United States) • GB (United Kingdom) • EU (European Union) • AU (Australia) • CN (China) • IN (India) • KR (Korea)
PWR-WUA5V45W1US	USB type C power supply adaptor with United States plug. USB PD 3.1 power supply with an input of 100-240VAC and a self-adjusting output ranging from 5V/3A to 20V/2.25A.	Sold separately. Used with USB-C Cable (CBL-EM45-USBC3A-01) to charge device.
PWR-WUA5V45W1EU	USB type C power supply adaptor with European Union plug. USB PD 3.1 power supply with an input of 100-240VAC and a self-adjusting output ranging from 5V/3A to 20V/2.25A.	Sold separately. Used with USB-C Cable (CBL-EM45-USBC3A-01) to charge device.
PWR-WUA5V45W1GB	USB type C power supply adaptor with United Kingdom plug. USB PD 3.1 power supply with an input of 100-240VAC and a self-adjusting output ranging from 5V/3A to 20V/2.25A.	Sold separately. Used with USB-C Cable (CBL-EM45-USBC3A-01) to charge device.
PWR-WUA5V45W1AU	USB type C power supply adaptor with Australia plug. USB PD 3.1 power supply with an input of 100-240VAC and a self-adjusting output ranging from 5V/3A to 20V/2.25A.	Sold separately. Used with USB-C Cable (CBL-EM45-USBC3A-01) to charge device.
PWR-WUA5V45W1CN	USB type C power supply adaptor with China plug. USB PD 3.1 power supply with an input of 100-240VAC and a self-adjusting output ranging from 5V/3A to 20V/2.25A.	Sold separately. Used with USB-C Cable (CBL-EM45-USBC3A-01) to charge device.
PWR-WUA5V45W1KR	USB type C power supply adaptor with Korea plug. USB PD 3.1 power supply with an input of 100-240VAC and a self-adjusting output ranging from 5V/3A to 20V/2.25A.	Sold separately. Used with USB-C Cable (CBL-EM45-USBC3A-01) to charge device.
PWR-WUA5V45W1IN	USB type C power supply adaptor with India plug. USB PD 3.1 power supply with an input of 100-240VAC and a self-adjusting output ranging from 5V/3A to 20V/2.25A.	Sold separately. Used with USB-C Cable (CBL-EM45-USBC3A-01) to charge device.



EM45 RFID Connect Cradle

Introducing the new Workstation Connect Cradle for EM45 RFID. This accessory allows EM45 RFID to connect to multiple, purpose-built peripherals and enable Zebra Workstation Connect on an external monitor. The Connect Cradle offers connections for standard workstation setups (monitor, keyboard, mouse).



Connect Cradle

SKU# CRD-EM4X-1SNWS-01

Workstation

- This connect cradle, allows users to use EM45 RFID device as a workstation or kiosk. Includes HDMI, Ethernet, USB-A (x4) ports, shims, and 3.5mm headset jack. Power supply, DC line cord and AC line cord are all sold separately.

Power Supply & DC Line Cord

SKU# PWR-BGA12V50W0WW | SKU# CBL-DC-388A2-01

Power Supply | DC Line Cord

- Power Supply [PWR-BGA12V50W0WW](#) for workstation connect cradle: 100-240 VAC, 12VDC, 4.16A.
- DC Line Cord [CBL-DC-388A2-01](#) to be with used with the above power supply for Workstation connect cradle
- Country-specific AC line cord is required ([Listed here](#)).

AC line cords

Country-specific AC line cords: grounded, 3-prong

SKU#	Country / region	Note
23844-00-00R	North America (United States, Canada, Mexico)	7.5 feet long Commonly used with chargers mounted in server racks
50-16000-678R	North America (United States, Canada, Mexico)	3 feet long
50-16000-221R	North America (United States, Canada, Mexico)	6 feet long
50-16000-727R	Brazil	1.8 meters (6 feet) long
50-16000-680R	Argentina	1.8 meters (6 feet) long
50-16000-217R	American Samoa, Australia, New Guinea	1.8 meters (6 feet) long
50-16000-218R	Japan	1.8 meters (6 feet) long
50-16000-219R	Antigua, Bermuda, Burma, Channel Islands, Hong Kong, Iraq, Ireland, Malaysia, North Ireland, Scotland, Singapore, United Kingdom, Wales	1.8 meters (6 feet) long
50-16000-257R	China	1.8 meters (6 feet) long
50-16000-220R	Europe, Abu Dhabi, Bolivia, Dubai, Egypt, Iran, Korea, Russia, Vietnam	1.8 meters (6 feet) long
50-16000-671R	Italy	1.8 meters (6 feet) long
50-16000-669R	India, S. Africa, Africa	1.8 meters (6 feet) long



Accessories that power devices



Power supply, cables, and adaptors

Country-specific AC line cords: ungrounded, 2-prong

SKU#	Country / region	Note
50-16000-182R	United States	Type A NEMA 1-15 plug
50-16000-255R	Europe, Abu Dhabi, Bolivia, Dubai, Egypt, Iran, Korea, Russia, Vietnam.	Type C CEE7/16 plug
50-16000-670R	Bermuda, Hong Kong, Iraq, Ireland, Malaysia, Singapore, United Kingdom.	



Third Party Accessories for EM45 RFID

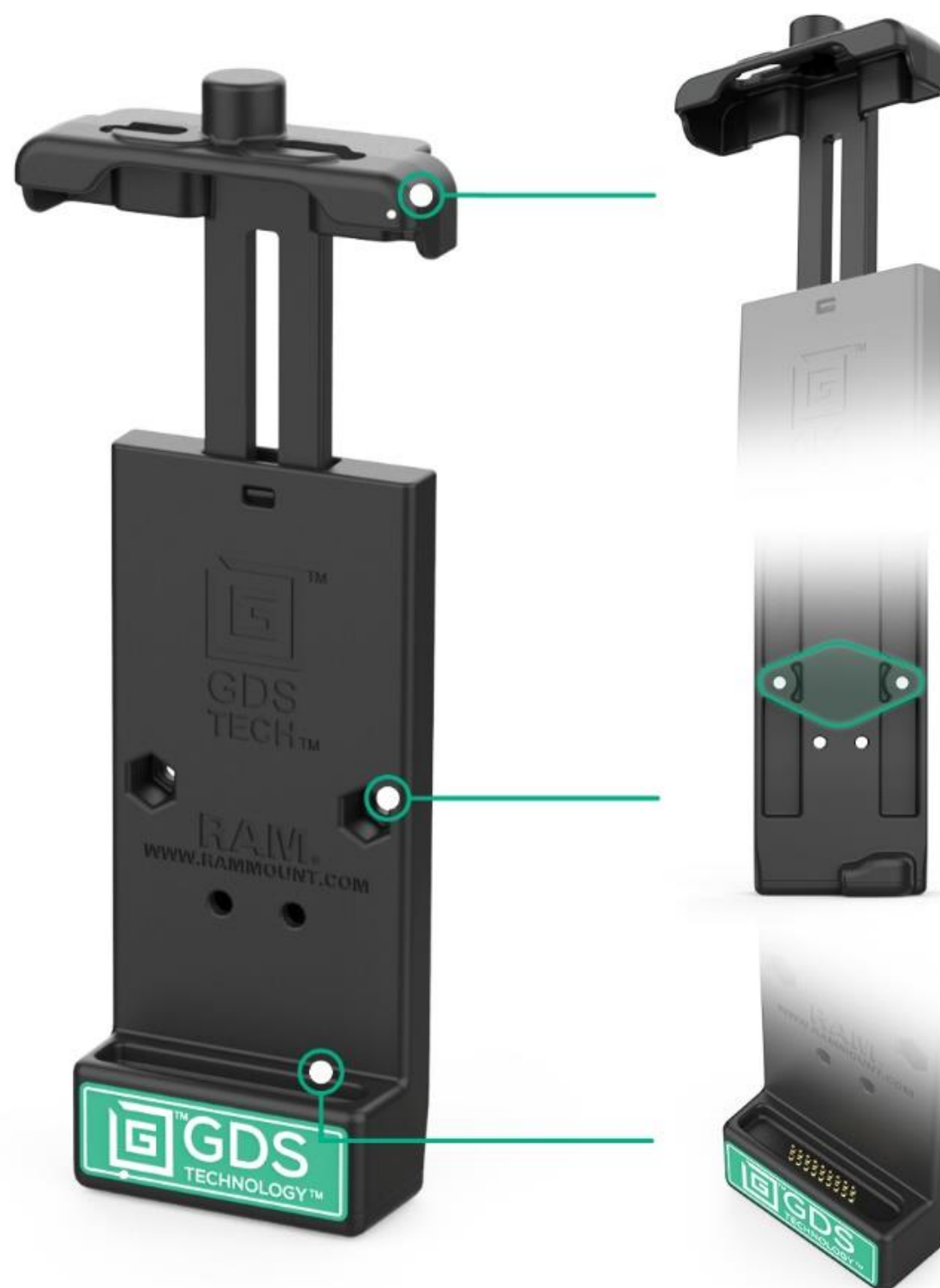
Note: Products sold that do not bear the Zebra brand name are serviced and supported exclusively by their manufacturers in accordance with terms and conditions packaged with the products. Zebra's Limited Warranty does not apply to products that are not Zebra branded, even if packaged or sold with Zebra products. Please contact the manufacturer directly for technical support and customer service.

[Back to Table of Contents](#)



IntelliSkin® with GDS® Tech™ for Zebra EM45 Handheld Computer

Next generation durability, fast charging, and ease of use providing a remarkable boost in efficiency your workforce needs.



Docking

Sping-loaded top cup for easy one-handed docking and removal

Mounting

2-Hole AMPS pattern for mounting a ball adapter

Charging

Pogo pin docking contacts for charging

3PTY-RAM-GDS-DOCK-V3CPAU

GDS® Vehicle Dock for Phones with IntelliSkin®

3PTY-RAM-SKIN-ZE37CNC

IntelliSkin® with USB-C Port for EM45

3PTY-RAM-SKIN-ZE37-NC

IntelliSkin® for EM45



Key Differentiator

The internal USB-C connector protects the port, converting it into flat, easy-to-clean pogo pads for effortless docking, extending device life, and reducing ownership costs.

Compatible Hardwire Chargers

3PTY-RAM-GDS-CHARGE-V3C2U

GDS® 10-30V Power Delivery Hardwire Charger

3PTY-RAM-GDS-CHARGEV3CH2U

GDS® 30-64V Power Delivery Hardwire Charger



GDS® Charging Docks

for Zebra EM45 Handheld Computer



3PTY-RAM-GDS-DOCK-D7U
GDS® Desktop Dock with Power Delivery - Small Tablets & Phones



3PTY-RAM-GDS-DOCK-6G16P
GDS® 6-Port Charging Dock for Tablets and Phones with IntelliSkin®



3PTY-RAMGDSDOCK6G16PRJ45
GDS® 6-Port Charging Dock with RJ45 Ports for Tablets and Phones with IntelliSkin®

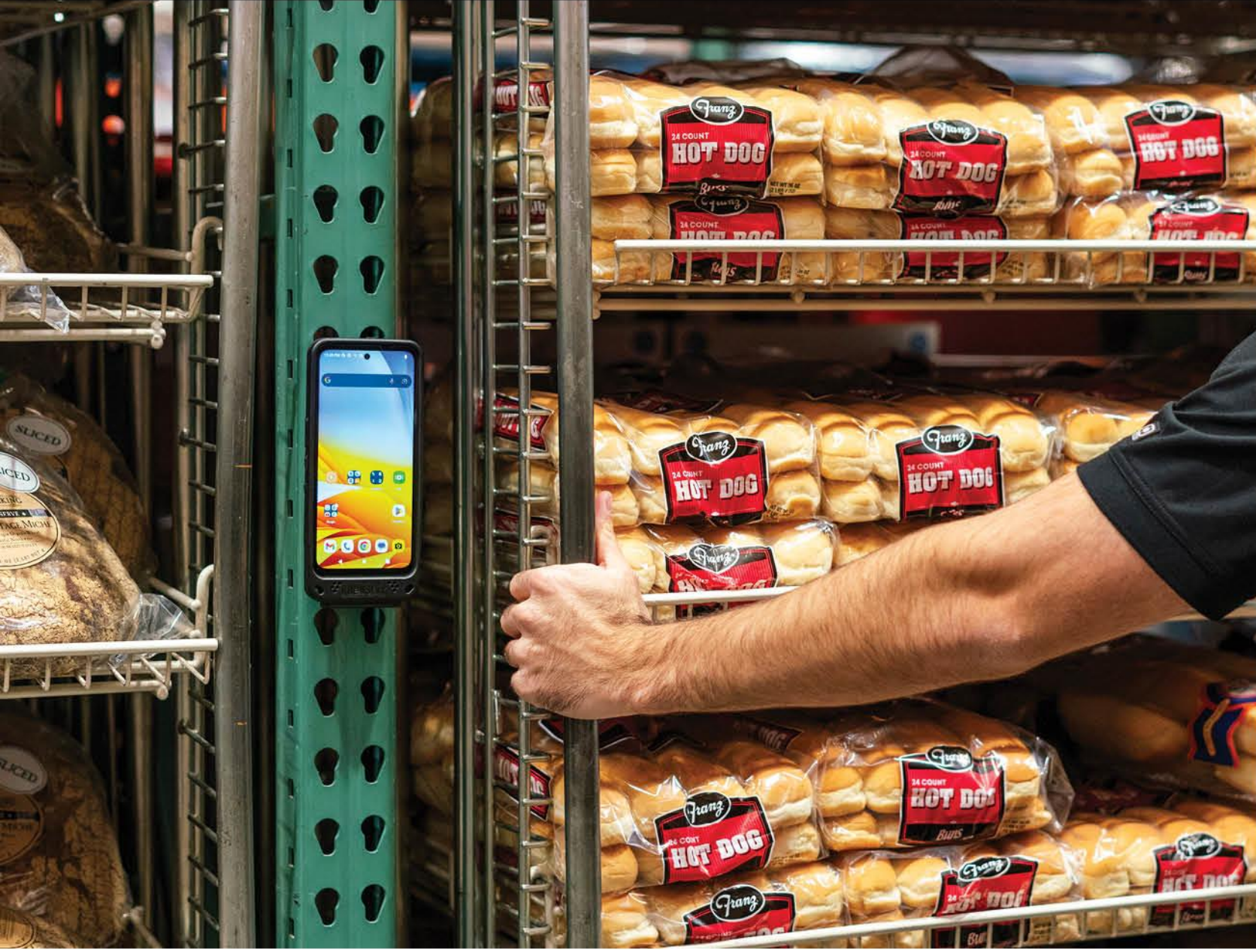


Compatible with any Zebra Handheld wrapped in IntelliSkin®

3PTY-RAM-GDS-DOCK-6G15P
GDS® 6-Port Charging Dock for Zebra Handheld PCs with IntelliSkin®



3PTY-RAMGDSDOCK6G15PRJ45
GDS® 6-Port Charging Dock with RJ45 Ports for Zebra Handheld PCs with IntelliSkin®



RAM® Accessories & Mounts for Zebra EM45 Handheld Computer



3PTY-RAM-102U-B-247
RAM® Forklift Mount C-Size
with Short Arm



3PTY-RAM-GDS-SS1U
GDS® Shoulder Strap Accessory

BLACK RUGGED BOOT FOR ZEBRA EM45 RFID

Increase the lifetime of your EM45 device by protecting it with the MOBILIS® rugged boot!

The EM45 Zebra is designed for intensive use in environments where drops and shocks are frequent. The MOBILIS® Protech case offers unbeatable protection.



Rugged boot for Zebra EM45 RFID
3PTY-MOB-065029

40X
MILITARY
STANDARD

x1000
DROPS
1m50/5ft

ORIGINE
FRANCE
GARANTIE

AFNOR Cert. 107672



AIRCELL SYSTEM

4 air pockets to absorb shocks.
Up to **1000 drops** from 1.50m/5ft



RESPONSIVE BUTTONS

High **tactile reactivity**



HANDSTRAP READY

Compatible with MOBILIS® Hand Strap



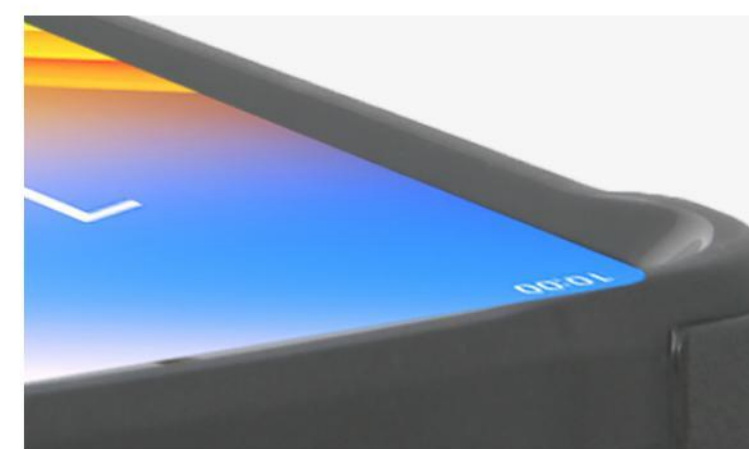
ANTIMICROBIAL PROTECTION

Sanitized® labeled technology:
Eliminates **99%** of microbes in 24 hours



ECO-DESIGN

Case made with **30% recycled** material & **100% recyclable**



ADVANCED RAISED EDGES

Design to protect the screen and camera lens **in the event of falls**



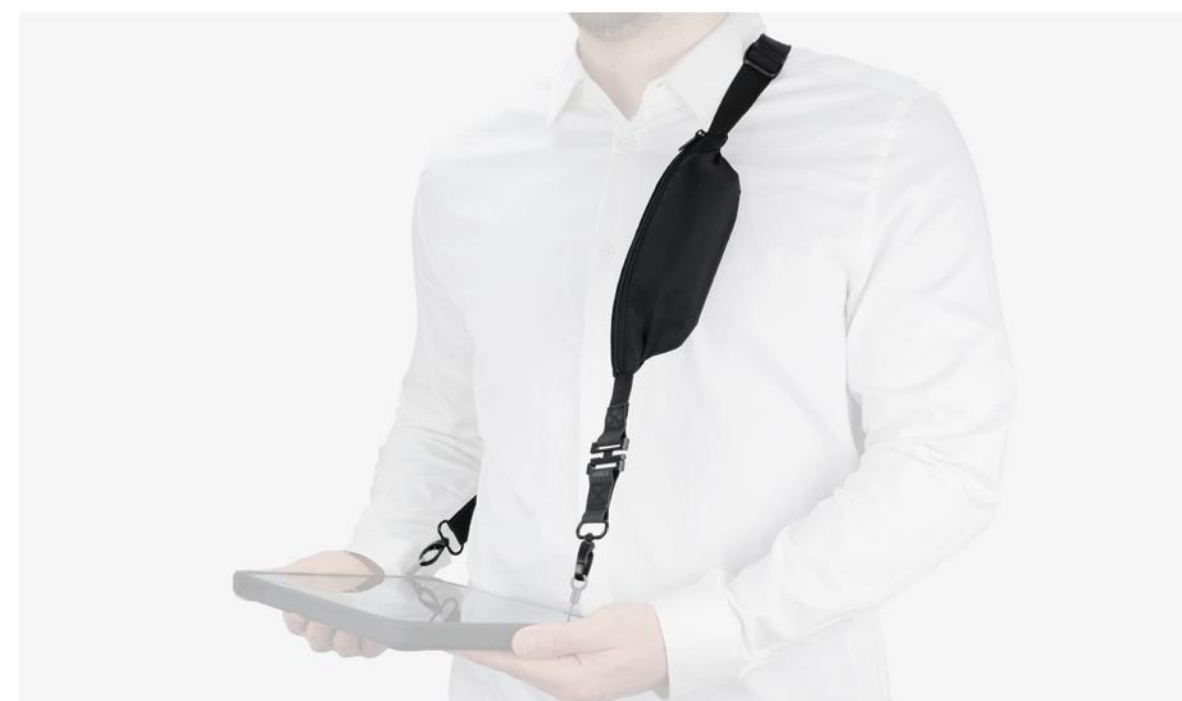
EXPLORE OUR
ZEBRA PRODUCTS



ADDITIONAL PRODUCTS



HAND STRAP
3PTY-MOB-001367



POCKET SHOULDER STRAP
3PTY-MOB-001092



BASIC SHOULDER STRAP
2 ATTACHMENT POINTS
3PTY-MOB-001093



HOLSTER SIZE M
3PTY-MOB-031002

BOOST YOUR BRAND VISIBILITY !



Customize your protective boots
with your color and logo

LEARN MORE, CONTACT US!

CONTACT :

✉ Imebrouki@mobiliscase.com
☎ +33 682 005 064
🌐 datacapture.mobiliscase.com

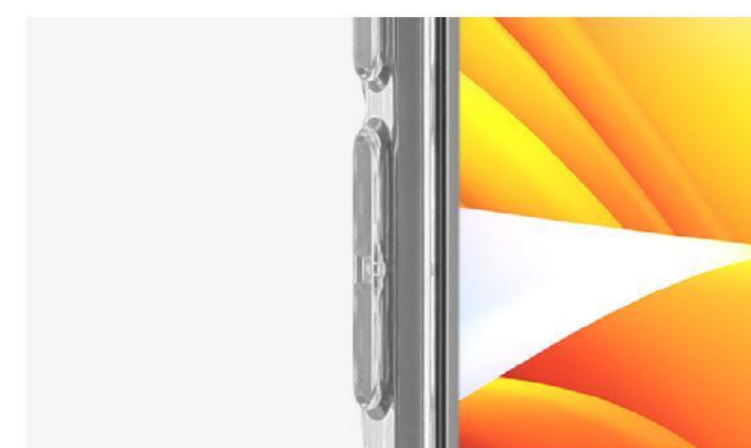
CLEAR RUGGED BOOT FOR ZEBRA EM45 RFID

Increase the lifetime of your EM45 device by protecting it with the MOBILIS® rugged boot!

The EM45 Zebra is designed for intensive use in environments where drops and shocks are frequent. The MOBILIS® Protech case offers unbeatable protection.



DROP SAFE CORNERS
4 air pockets to absorb shocks.
Up to **500 drops from 1.20m/4ft**



RESPONSIVE BUTTONS
High **tactile reactivity**



ACCESS TO ALL PORTS
Allows charging via USB-C

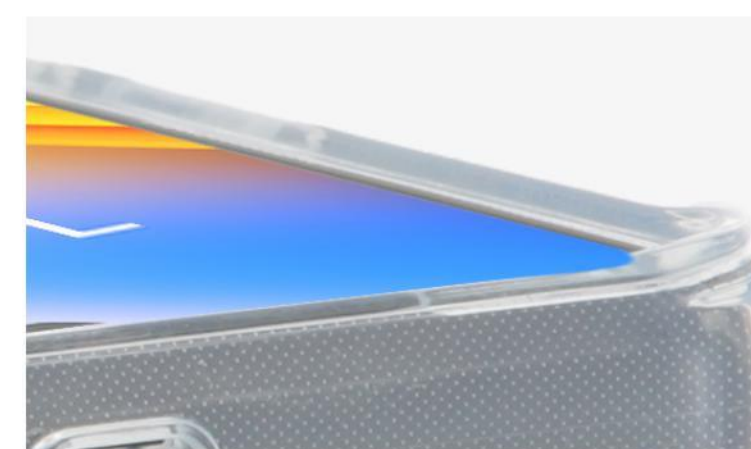
Origine rugged boot for Zebra EM45 RFID
3PTY-MOB-048057



ANTIMICROBIAL PROTECTION
Sanitized® labeled technology:
Eliminates **99% of microbes in 24 hours**



ECO-DESIGN
Case made with **100% recycled material & 100% recyclable**



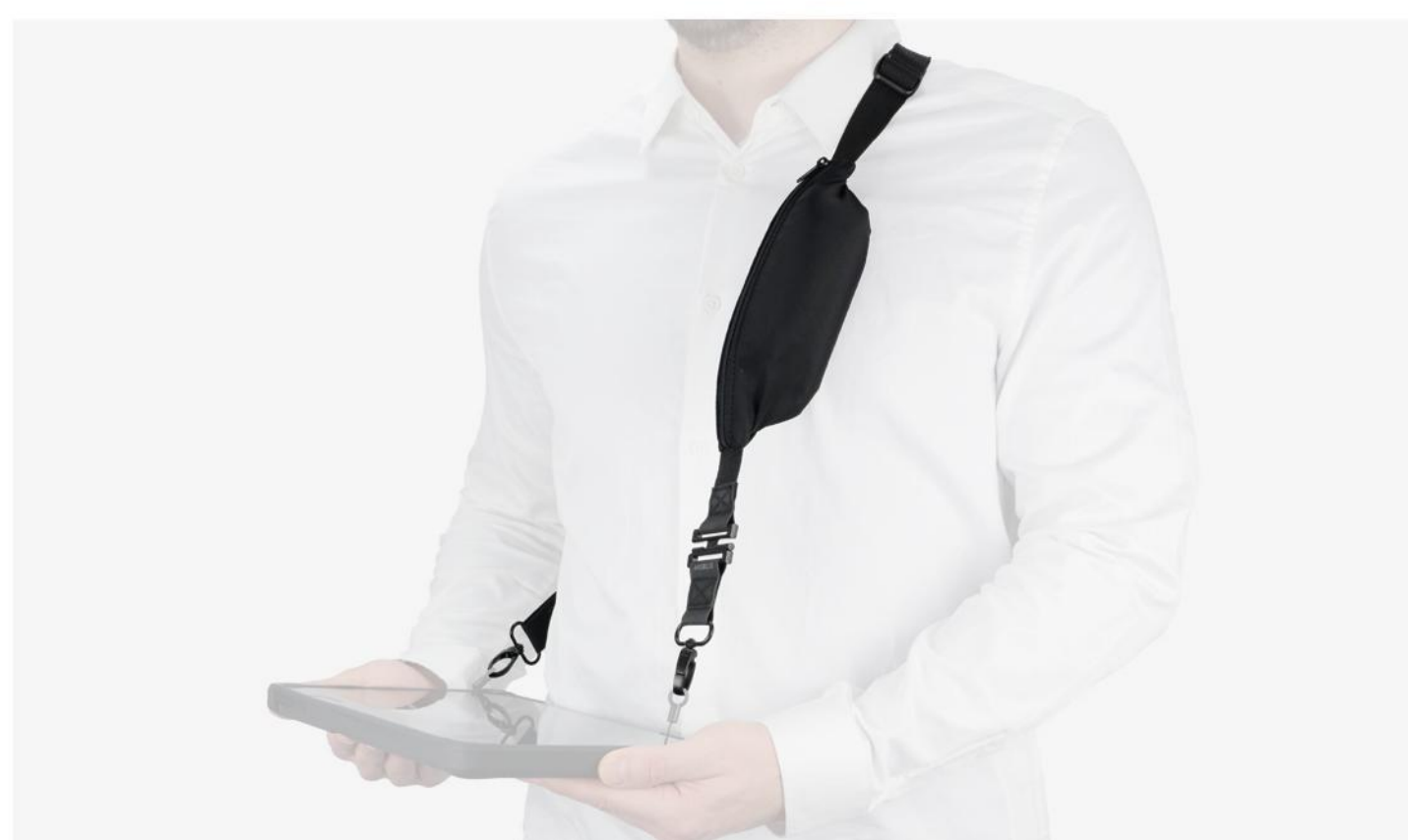
ADVANCED RAISED EDGES
Design to protect the screen and camera lens **in the event of falls**



EXPLORE OUR
ZEBRA PRODUCTS



ADDITIONAL PRODUCTS



POCKET SHOULDERSTRAP
3PTY-MOB-001092



HOLSTER SIZE M
3PTY-MOB-031002

CONTACT :

✉ Imebrouki@mobiliscase.com
☎ +33 682 005 064
💻 datacapture.mobiliscase.com